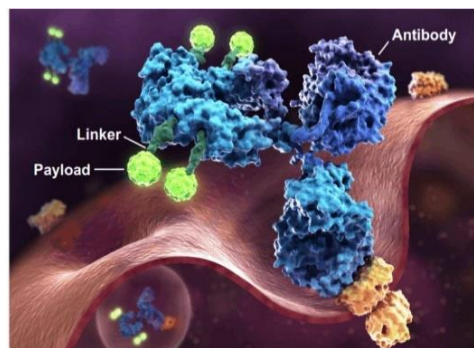


Overview

Vivia Biotech can profile your ADC compound by utilizing state-of-the-art assays within a native environment, and gaining access to real biological samples from patients, thereby streamlining the selection process for ADC Hit-to-Lead compounds


Advancing ADC Hit-to-Lead Compounds through Cutting-Edge Assays and Real Patient Samples in Native Environment

Vivia Biotech can profile your ADC compound by utilizing state-of-the-art assays within a native environment, and gaining access to real biological samples from patients, thereby streamlining the selection process for ADC Hit-to-Lead compounds.



Our ex vivo assays enable researchers to assess the **efficacy and toxicity of ADCs in a patient-specific context**, providing crucial insights into treatment response and aiding in the selection of optimal therapeutic strategies.

Click  for custom assays in solid tumors

Click  for custom assays in hematological malignancies

Vivia Biotech has developed accurate assays for ADC compounds specifically tailored for characterizing the **ex vivo pharmacological profile on patient samples**, leveraging our cutting-edge **proprietary native environment assays**. Our robust experience in conducting ex vivo assays of ADCs center on four key capacities:


Santiago Grisolia 2
28760 . Madrid . Spain
(+34) 91 129 3151
admin@viviabiotech.com

www.viviabiotech.com

Overview

Vivia Biotech can profile your ADC compound by utilizing state-of-the-art assays within a native environment, and gaining access to real biological samples from patients, thereby streamlining the selection process for ADC Hit-to-Lead compounds

Click  for custom assays in solid tumors

Click  for custom assays in hematological malignancies

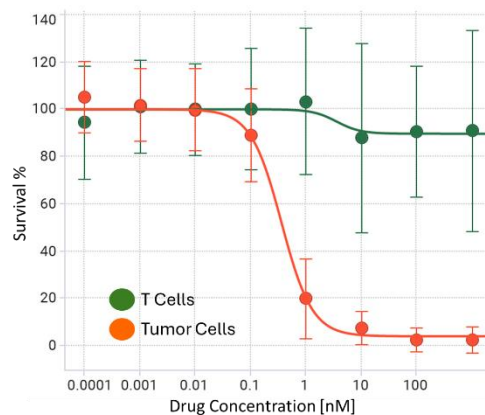
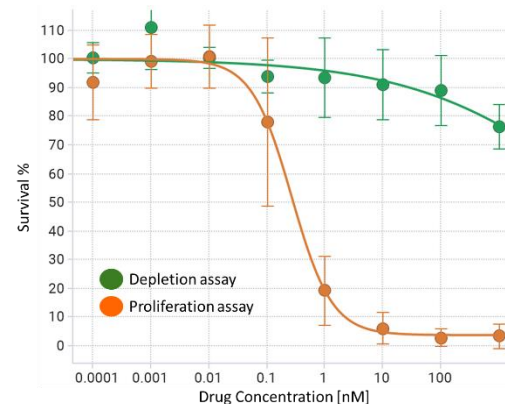
Santiago Grisolia 2
28760 . Madrid . Spain
(+34) 91 129 3151

admin@viviabiotech.com

www.viviabiotech.com

1. Tailored Assay Selection:

We select the assay that best suits your ADC payload, whether it involves assessing depletion or proliferation dynamics. Our tailored approach ensures that the **assay aligns optimally** with the specific characteristics of your compound, leading to more **accurate and insightful results**.




2. Off-Target Toxicity Analysis:

Our comprehensive approach includes analyzing toxicity not only in target cells but also in off-target populations or even in normal bone marrow (NBM) cells. This thorough assessment provides **valuable insights into the safety profile** of your ADC

Overview

Vivia Biotech can profile your ADC compound by utilizing state-of-the-art assays within a native environment, and gaining access to real biological samples from patients, thereby streamlining the selection process for ADC Hit-to-Lead compounds

Click  for custom assays in solid tumors

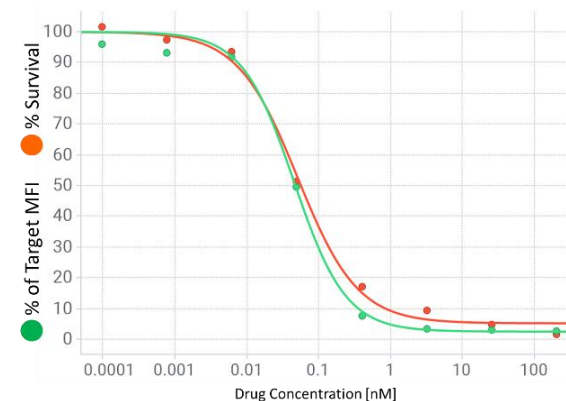
Click  for custom assays in hematological malignancies

Santiago Grisolia 2
28760 . Madrid . Spain
(+34) 91 129 3151
admin@viviabiotech.com

www.viviabiotech.com

3. Internalization-Activity Correlation:

We investigate the correlation between internalization and killing efficacy. We explore the impact of both competitive or non-competitive monoclonal antibodies (MAb) that compete or not with your ADC target, as well as ADCs conjugated with pH-sensitive probes. Our approach facilitates an understanding of how internalization dynamics influence the overall therapeutic effectiveness of your ADC.



4. Target Expression-Activity Correlation:

We measure the cell surface expression of diverse markers across various pathologies using the mean Receptor Density (RD). Through the assessment of ADCs activity via the AUC, we unveil the correlation between cell surface expression (RD) and activity (AUC). This provides valuable insights into the mechanisms driving your ADC efficacy.

